



# 4. WORLD SENIOR ● TEAM CHAMPIONSHIP

26.06. - 04.07.2016

RADEBEUL

**ZMDI**<sup>®</sup>

Schachfestival Dresden e.V.

# 4. WORLD SENIOR ● TEAM CHAMPIONSHIP

PRESENTED BY

**ZMDI**<sup>®</sup>  
Schachfestival Dresden e.V.





## PREFACE

We are honored to carry out the World Senior Team Championship from the 26<sup>th</sup> June to the 04<sup>th</sup> July 2016 in Dresden under the patronage of the FIDE.

Teams from all FIDE federations have the right to participate. They may represent a national federation or any regional structure of a national federation. All players must come from the same federation.

The tournament will be an Open one. If teams which consist only of women take part, we will organize for these teams (women teams) a special ranking.

Each team shall consist of four players, and in addition one reserve player may be nominated. The substitute is only allowed to play board 4.

A provisional naming of the players and the substitute has to be submitted together with the registration of the team. Changes in the team can be made until the captains' meeting takes place.

**Section A:** Open tournament for teams with players 50+ (by 31<sup>st</sup> December 2016) no restriction

**Section B:** Open tournament for teams with players 65+ (by 31<sup>st</sup> December 2016)

**Section C:** Tournament for woman teams with players 50+ (by 31<sup>st</sup> December 2016)

## ORGANIZER

ZMDI Schachfestival Dresden e.V.  
Oskar-Mai-Straße 6  
D-01159 Dresden

## PLAYING VENUE

Radisson Blu Hotel  
Nizzastraße 55  
D-01445 Radebeul

## CONTENTS

Schedule .....	8
Social program .....	9
Regulations .....	10
Title .....	10
Prizes .....	11
Ranking .....	12
Entry fee .....	13
Accommodation .....	14
Registration .....	20
Transfer .....	21





# SCHEDULE

SO	2016-06-26	10:00 am	captains' meeting
		02:00 pm	opening ceremony and round 1
MO	2016-06-27	09:30 am	round 2
DI	2016-06-28	09:30 am	round 3
MI	2016-06-29	09:30 am	round 4
DO	2016-06-30	09:30 am	round 5
FR	2016-07-01	09:30 am	round 6
SA	2016-07-02	09:30 am	round 7
SO	2016-07-03	09:30 am	round 8
MO	2016-07-04	09:30 am	round 9
		Closing ceremony short time after the end of round 9	



# SOCIAL PROGRAM



Supporting events and events in chess will be arranged by the organizers. On your request we can arrange sightseeing tours of Radebeul, Dresden and surroundings and visits of cultural events too (for accompanying persons, too). You're welcome to get to know the lovely wine-growing estates of Wackerbarth and the beauty of Altkötzschenbroda. Some of the most popular excursions for visitors to Radebeul and Dresden are:

The vineyards of Radebeul, a ride on the narrow-gauge railway 'Löbnitzdackel', the historic buildings of the baroque town Dresden, a trip to the Elbe sandstone massif known as Swiss Saxony, Church of Maria in the historical city centre of Pirna, Baroque hunting lodge – Moritzburg Castle, a trip on an old paddle steamer on the river Elbe, the nice baroque parks – Pillnitz and Großsedlitz, a concert in the Richard Wagner memorial, or the Baroque Dresden as a panoramic picture. You can also have excursions through the city centre of Dresden, visits to the art museums or a visit in the Church of our Lady.



## REGULATIONS

Swiss system in 9 rounds for teams with 5 players (4 boards + 1 optional reserve). Time: 90 min/40 moves + 30 minutes for the rest of the game + 30 sec for each move from the first move. The default time at the start of all rounds is 30 minutes.

## TITLE

The winning team obtains the title  
„**World Senior Team Champion 2016 A**“ or  
„**World Senior Team Champion 2016 B**“

The best placed women team obtains the title  
„**World Woman's Senior Team Champion 2016**“



## PRIZES

<b>1<sup>st</sup> Prize</b>	Gold medals	+ 1,200.- €
<b>2<sup>nd</sup> Prize</b>	Silver medals	+ 900.- €
<b>3<sup>rd</sup> Prize</b>	Bronze medals	+ 600.- €
<b>4<sup>th</sup> Prize</b>	Diploma	+ 500.- €
<b>5<sup>th</sup> Prize</b>	Diploma	+ 400.- €

The team with the best difference of performance in A and B obtains a special prize in the amount of about 200.- €.

There will be additional prizes for the best players at each board (board 1 - 4 plus reserve player).

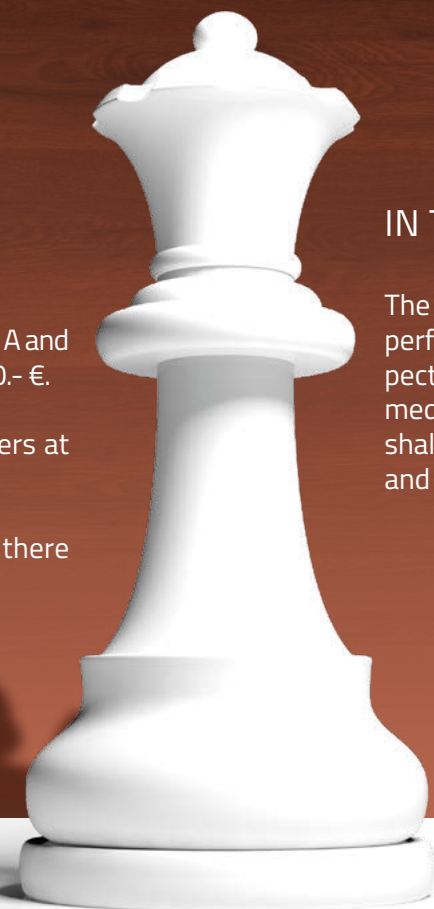
If women teams take part in the tournament, there will be the following additional prizes:

<b>1<sup>st</sup> Prize</b>	Gold medals	+ 500.- €
<b>2<sup>nd</sup> Prize</b>	Silver medals	+ 300.- €
<b>3<sup>rd</sup> Prize</b>	Bronze medals	+ 100.- €

## INDIVIDUAL PRIZES

### IN TEAM COMPETITIONS

The players who achieved the best performance rating on their respective boards shall receive gold medals. Silver and bronze medals shall be awarded to the second and third place winners.





## RANKING

The sum of scores of each game in a match is referred to as the board points.

The team which scores more board points in a match than its opponents receives two match points, the opponents receive no match points. In the case a match ends in such a way that the sum of the board points is equal to that of its opponents, each team receives one match point. However, if both teams score 0 board points, both teams will receive zero match points.

The ranking will be made according to match points, the team obtaining the highest number of match points being declared the winner of the competition. The order of teams that finish with the same number of match points shall be determined by application of a tie-breaking procedure.



## ENTRY FEE

- 1) The entry fee is **50.- €** per named player until **30<sup>th</sup> April 2016**. This means a maximum of 250.- € per team.
- 2) After the **01<sup>st</sup> May 2016** the entry fee is **75.- €** per named player. This means a maximum of 375.- € per team.
- 3) After the **30<sup>th</sup> May 2016** the acceptance of entries cannot be guaranteed. Please await confirmation of acceptance before making travel arrangements.

The entry fee shall be paid to the following account:

**Ostsächsische Sparkasse Dresden**

**IBAN:** DE 91 8505 0300 3120 070 105

**BIC:** OSDDDE81

In accordance with the FIDE regulations, each team is obliged to make the payment of 100 € for the fee. According to the FIDE regulations, the entry fee shall be paid by the federations to the FIDE before or at the start of the competition. If the entry fee is not paid until the end of round 2, these teams will not be paired in subsequent rounds.





## ACCOMMODATION



### **Radisson Blu Park Hotel & Conference Centre, Dresden Radebeul**

Where the Saxon Wine Road meets the ripe slopes of Lößnitz, there lies the wine, villa and garden city Radebeul surrounded by luscious greens.

On the sun-drenched right side of the Elbe river and in reach of many of Dresden's sights, the Radisson Blu Park Hotel & Conference Center is one of the most popular hotels in the entire region.

.....  
Nizzastrasse 55 - 01445 Radebeul

Telephone: +49 (0)351 8321-0

E-Mail: [info.radebeul@radissonblu.com](mailto:info.radebeul@radissonblu.com)

[www.radissonblu.com/parkhotel-dresdenadebeul](http://www.radissonblu.com/parkhotel-dresdenadebeul)





# ACCOMMODATION

## Unser Service für Sie:

- ✓ Well-trained and motivated employees that will exceed your expectations.
- ✓ What ever your question may be, our answer is always YES I CAN!<sup>SM</sup>
- ✓ Stylish hotel rooms, suites and apartments
- ✓ 3,150 m<sup>2</sup> exceptional meeting and event area available to you
- ✓ 2 restaurants with sun terraces, hotel bar with fire place as well as a separate smoking lounge
- ✓ 360 underground garage parking spots and our own car wash
- ✓ Parking fee is 7.00 € / day / vehicle
- ✓ Free WiFi in the entire hotel is standard
- ✓ 1,000 m<sup>2</sup> spa area with swimming pool à 25 m – jacuzzi – saunas – hamam – fitness center

Further information about our hotel can be found at:  
[www.radissonblu.com/parkhotel-dresdenradebeul](http://www.radissonblu.com/parkhotel-dresdenradebeul)



You can book accommodations at the **Radisson Blu Park Hotel & Conference Center, Dresden Radebeul** using our special offer (chess fare):

Single Room	59.00,- € / night
Double Room	78.00,- € / night

Additionally, you can book dinner for 17.50 € / night.\*  
At lunchtime we offer a imbiss in the playing area.

## Included in the room price are:

- ✓ Breakfast (SUPER BREAKFAST)
- ✓ Bathrobe with slippers
- ✓ Room safe ✓ Minibar
- ✓ Free coffee and tea station in the hotel room
- ✓ WiFi access ✓ Cleaning every 3 days
- ✓ Fitness club access incl. sauna, swimming pool, hamam, fitness equipment



Studio Standard 24m<sup>2</sup>/ max. 2 Personen



\*If booked upon arrival dinner costs 21.00,- € / night.  
The bill is to be paid on the day of departure at the reception of the hotel.



# ACCOMMODATION

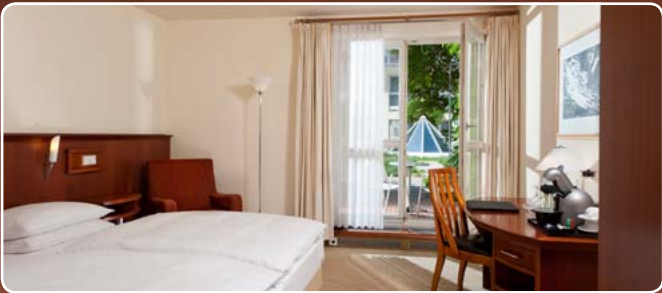
## Additional and expandable booking options

Superior rooms and studios can only be booked upon arrival and if available.

ROOM	
Superior Room	+10.00,- € / night
Studio Standard with terrace/balcony	+20.00,- € / night
Apartment in the villas park	+40.00,- € / night
SPECIAL SERVICE	
Daily cleaning	+5.00,- € / night
Additional bed in Standard room	+30.00,- € / night

## Attention!

If you decide to shorten your stay after arrival, you will be charged an additional night with 100%. Arriving without having previously booked, will result in the loss of the ability to book the chess fare.



Superior Room 27 m² / max. 2 adults



Apartment 39 m² / max. 4 adults

## Location

The Radisson Blu Park Hotel & Conference Center, Dresden Radebeul is located only a few minute walk away from the heart of the city Radebeul. The wine and garden city as well as the historical center of the city welcome you to stroll along the streets. Connoisseurs call Radebeul the 'Nice of Saxony' and is one of the most popular residential areas around Dresden. Situated between the state capital Dresden and Meißen, the Elbe river and the lavish vineyards, Radebeul is the ideal place to relax and enjoy trips in the surrounding area. It is only 7 km from the historical city center of Dresden to the Radisson Blu Park Hotel & Conference Center, Dresden Radebeul.



## TripAdvisor Traveling Rating



Based on 254 Traveler reviews



## REGISTRATION

You can register by informal letter or fax to:

**ZMDI Schachfestival Dresden e.V.**

Oskar-Mai-Straße 6

D-01159 Dresden

Fax: +49 (0)351 4161639

E-Mail: [guntram.ledfuss@schachfestival.de](mailto:guntram.ledfuss@schachfestival.de)

The following details must be included:  
team order with names, surnames, FIDE-ID, ELO-rating and national rating, address, telephone number and e-mail address of the team captain, number and duration of accommodation needed.

**End of registration: 2016-05-30**

The organizers would be glad if you could show your interest earlier (by 2016-04-30).



## TRANSFER

- a) Airport Dresden - hotel / tournament hall  
(10 km, Taxi 20.- €, Train + Bus 4.00 € / person)
- b) Mainstation Dresden - hotel / tournament hall  
(13 km, Taxi 25.- €, Bus 4.00 € / person)
- c) Airport - Bus shuttle for 4 persons or more  
on request latest 10 days in advance, 36.- €







Die kompletten Ausschreibungsunterlagen finden Sie unter **[www.schachfestival.de](http://www.schachfestival.de)**



The complete tender documents can be found at: **[www.schachfestival.de](http://www.schachfestival.de)**



Полные тендерные документы можно  
найти на: **www.schachfestival.de**



Los documentos de licitación se pueden encontrar en: **[www.schachfestival.de](http://www.schachfestival.de)**

**www.schachfestival.de**



In case of doubt the English version will apply.

## NOTES

[illegible]



# HOST

Fédération Internationale des Échecs (FIDE)

# ORGANIZER

ZMDI Schachfestival Dresden e.V.

# PLAYING VENUE

Radisson Blu Hotel  
Nizzastraße 55  
D-01445 Radebeul

Mistakes and changes are possible



For questions please contact the organizer  
ZMDI Schachfestival Dresden e.V. under the following address:  
Oskar-Mai-Straße 6 | 01159 Dresden | Tel.: +49 (0)351 416 16 29 | Fax: +49 (0)351 416 16 39  
E-Mail: [dirk.jordan@schachfestival.de](mailto:dirk.jordan@schachfestival.de)

**ZMDI**<sup>®</sup>  
Schachfestival Dresden e.V.